

To Let
£11,250 per annum
exclusive, per unit



High Quality Light Industrial Units

945 - 948 SQ FT (87.79 - 88.07 SQ M)

📍 UNITS 15 & 17, SPRING STREET BUSINESS PARK SPRING STREET, BOLTON, BL3 6EH

TW
Turner Westwell
Commercial Agents

KEY FEATURES

- High quality industrial and workshop units situated on a superb Business Park
- Easily accessible to the M60/M61/M62 motorways
- Convenient central Bolton location
- 6 metre eaves
- 24 hour access
- High specification (suitable for online retail, storage and distribution, light manufacturing uses, etc).
- New lease
- EPC Rating B for each unit
- 100% Business Rates Relief for qualifying occupiers
- Units from £11,250 per annum exclusive (plus VAT)
- Available from March 2025
- Vehicle uses are not permitted



LOCATION

Spring Street Business Park is situated in a predominantly industrial area in southern Bolton, adjacent to St Marks Street and Lever Street, and is surrounded by various workshops, warehouses, and mill facilities of differing ages and designs. Several national companies are located nearby, including Tool Station, Parcels 2 Go, Brandon Hire and Peugeot.

The property benefits from excellent transport connections. Manchester Road (B6536) is accessible approximately 0.5 miles to the northeast, providing immediate routes to the A666 St Peters Way and the National Motorway Network.

Access to the site is available via both Lever Street and St Marks Street.

DESCRIPTION

The majority of Spring Street Business Park has undergone a recent development approximately 2 years ago, providing for a high quality Business Park environment.

The available accommodation, Units 15 & 17, extend to 945 and 948 sq ft respectively and each have the benefit 2 x car parking spaces to the front of the unit. The development is secured via a manual sliding cantilever gates for access.

The construction of the units is of a modern steel portal frame design, complemented by insulated profile PVC cladding for both the elevations and roof coverings, which include 50% translucent panels to aid natural visibility.

Internally, the units are finished with breeze block elevations below insulated cladding. The units each incorporate electronically operated roller shutter doors (2.85m wide x 3.35m high) set within the front elevation. The units have a minimum eaves height of approximately 6 metres.

Unit 15 currently incorporates a stud partition office which will potentially be removed by the existing Tenant at expiry of their existing lease.

The units are particularly well-suited for start-up businesses and are appropriate for storage and distribution, as well as light manufacturing and industrial operations. However, please note that vehicle related uses are not permitted upon the estate.

ACCOMMODATION

In accordance with the RICS Property Measurement (2nd Edition), we have calculated the following approximate Gross Internal Areas:

Description/Floor	Sq M	Sq Ft
Unit 15	87.79	945
Unit 17	88.07	948

SERVICES

The mains services connected to the property to include water, electricity supply and of course, mains drainage. Please note that Turner Westwell Commercial have not tested any of the service installations or appliances connected to the property.

LEASE TERMS

Available by way of a new Tenant's Full Repairing and Insuring lease for a minimum term of 3 years.

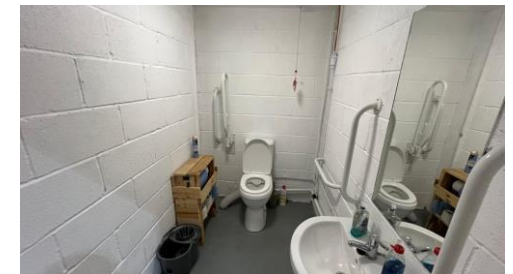
RENTAL

Unit 15 - £11,250 per annum exclusive

Unit 17 - £11,250 per annum exclusive

VAT

VAT is applicable and will be charged at the prevailing rate.



BUSINESS RATES

Our enquiries of the Valuation Office Agency website have revealed that the units each have a Rateable Value of £8,000, with effect from 1st April 2023. The 2024/2025 Business Rates Multiplier is 54.6 pence in the £ and the Small Business Rates Relief Multiplier is 49.9 pence in the £.

100% Business Rates Relief available for qualifying occupiers. Interested parties are advised to enquire directly with the Local Rating Authority (Bolton Council) in this regard.

SERVICE CHARGE

A service charge is levied in respect of the upkeep, maintenance and management of the common areas of the estate and is currently charged at £1.30 per sq ft. The service charge is subject to annual review.

LEGAL COSTS

Each party are to be responsible for their own legal costs involved in the transaction.

EPC

The units each have a current Energy Efficiency Rating of B(39). The certificates are valid until 29th June 2032. A full copy of the Reports are available upon request.

26-50

B

39 B

VIEWINGS

Strictly by appointment with the sole agents TURNER WESTWELL COMMERCIAL AGENTS.

Nathan Broughton | Property Agent

☎ 07393 799957 ✉ nathan.broughton@turnerwestwell.co.uk

Daniel Westwell | Joint Managing Director

BSc (HONS), MRICS | RICS Registered Valuer

☎ 07919 414752 ✉ daniel.westwell@turnerwestwell.co.uk

Important Notice : Messrs Turner Westwell Commercial Agents for themselves and for the vendors or lessors of this property whose agents they are given notice that a] The particulars are set out as a general outline only for the guidance of intending purchasers or lessees and do not constitute nor constitute part of an offer of contract, b] All descriptions, dimensions, reference to condition and necessary permissions for use and occupation and other details are given without responsibility and any intending purchaser or tenants should not rely on them as statements or representations of fact but must satisfy themselves by inspection or otherwise as to the correctness of each of them, c] no person in the employment of Messrs Turner Westwell Commercial Agents has any authority to make or give any representations or warranty whatsoever in relation to this property.



TURNER WESTWELL LIMITED is an active Private Limited, registered at Companies House under the number 14763558. TURNER WESTWELL LIMITED was incorporated on 28 March 2023 with a registered office address based in Chorley.